

# DH-IPC-HFW1430TL2-A

## 4MP Entry IR Fixed-focal Bullet Network Camera



### Series Overview

With features of simple installation, easy operation, and high performance-cost ratio, Dahua Entry series network camera is applicable to small and medium-sized scenes, such as homes/residences, small-sized retail stores, and other small and medium-sized enterprises.

### Functions

#### Smart H.265+ & Smart H.264+

With advanced scene-adaptive rate control algorithm, Dahua smart encoding technology realizes the higher encoding efficiency than H.265 and H.264, provides high-quality video, and reduces the cost of storage and transmission.

#### Smart Illumination

Dahua Smart Illumination technology can display image in the environment of low illuminance or completely dark environment. According to the distance of the targets, the camera adjusts illuminations intensity automatically to display the details of the moving target.

- 4-MP 1/3" CMOS image sensor, low luminance, and high definition image.
- Outputs max. 4 MP (2560 × 1440)@30 fps.
- H.265 codec, high compression rate, ultra-low bit rate.
- Built-in IR LED, and the max. illumination distance is 30 m.
- DWDR, 3D NR, HLC, BLC, digital watermarking, applicable to various monitoring scenes.
- ROI, SMART H.264+/H.265+, flexible coding, applicable to various bandwidth and storage environments.
- Built in Mic.
- 12 VDC power supply, easy for installation.
- IP67 protection.



#### Motion Detection

When moving objects appear in the monitoring image, Dahua Motion Detection technology triggers alarm or records.

#### Cyber Security

Dahua network cameras employ a series of security technologies, including security authentication and authorization, access control protocols, trusted protection, encrypted transmission and encrypted storage. These technologies improve the camera's defense against external cyber threats and prevent malicious programs from compromising the device.

#### Protection (IP67, Wide Voltage)

**IP67:** The camera passes a series of strict test on dust and soak. It has dust-proof function, and the enclosure can work normally after soaking in 1 m deep water for 30 minutes.

**Wide voltage:** The camera allows  $\pm 30\%$  (for some power supplies) input voltage tolerance (wide voltage range), and it is widely applied to outdoor environment with instable voltage.

### Technical Specification

#### Camera

|                            |   |
|----------------------------|---|
| Image Sensor               | 1/3" CMOS   |
| Max. Resolution            | 2560 (H) × 1440 (V)   |
| ROM                        | 16 MB   |
| RAM                        | 64 MB   |
| Scanning System            | Progressive   |
| Electronic Shutter Speed   | Auto/Manual 1/3 s–1/100,000 s   |
| Min. Illumination          | 0.01 lux@F2.0 (Color, 30 IRE)<br>0.001 lux@F2.0 (B/W, 30 IRE)<br>0 lux (Illuminator on) |
| S/N Ratio                  | >56 dB  |
| Illumination Distance      | Up to 30 m (98.43 ft) (IR LED)  |
| Illuminator On/Off Control | Auto; Manual  |
| Illuminator Number         | 2 (IR LED)  |
| Angle Adjustment           | Pan: 0°–360°<br>Tilt: 0°–90°<br>Rotation: 0°–360°                                       |

#### Lens

|                      |                        |                       |                      |                     |
|----------------------|------------------------|-----------------------|----------------------|---------------------|
| Lens Type            | Fixed-focal            |                       |                      |                     |
| Lens Mount           | M12                    |                       |                      |                     |
| Focal Length         | 3.6 mm                 |                       |                      |                     |
| Max. Aperture        | F2.0                   |                       |                      |                     |
| Field of View        | H: 76°; V: 40°; D: 92° |                       |                      |                     |
| Iris Control         | Fixed                  |                       |                      |                     |
| Close Focus Distance | 1.4 m (4.59 ft)        |                       |                      |                     |
| DORI Distance        | Detect                 | Observe               | Recognize            | Identify            |
|                      | 85.2 m<br>(279.53 ft)  | 34.1 m<br>(111.88 ft) | 17.0 m<br>(55.77 ft) | 8.5 m<br>(27.89 ft) |

#### Video

|                   |  |
|-------------------|--|
| Video Compression | H.265; H.264; H.264B; MJPEG (Only supported by the sub stream)   |
| Smart Codec       | Smart H.265+; Smart H.264+   |
| Video Frame Rate  | Main stream: 2560 × 1440@(1–25/30 fps)<br>Sub stream: 704 × 576@(1–25 fps)/704 × 480@(1–30 fps)<br>*The values above are the max. frame rates of each stream; for multiple streams, the values will be subjected to the total encoding capacity. |
| Stream Capability | 2 streams  |
| Resolution        | 4M (2560 × 1440); 3M (2304 × 1296); 1080p (1920 × 1080); 1.3M (1280 × 960); 720p (1280 × 720); D1 (704 × 576/704 × 480); VGA (640 × 480); CIF (352 × 288/352 × 240)  |
| Bit Rate Control  | CBR/VBR  |
| Video Bit Rate    | H.264: 32 kbps–4096 kbps<br>H.265: 12 kbps–4096 kbps   |
| Day/Night         | Auto(ICR)/Color/B/W  |
| BLC               | Yes  |

|                          |  |
|--------------------------|--|
| HLC                      | Yes  |
| WDR                      | DWDR   |
| White Balance            | Auto; natural; street lamp; outdoor; manual; regional custom |
| Gain Control             | Auto   |
| Noise Reduction          | 3D NR  |
| Motion Detection         | OFF/ON (4 areas, rectangular)                                |
| Region of Interest (RoI) | Yes (4 areas)  |
| Smart Illumination       | Yes  |
| Image Rotation           | 0°/180°  |
| Mirror                   | Yes  |
| Privacy Masking          | 4 areas  |

#### Audio

|                   |                             |
|-------------------|-----------------------------|
| Built-in MIC      | Yes, built-in Mic           |
| Audio Compression | G.711a; G.711Mu; G.726; PCM |

#### Alarm

|             |  |
|-------------|--|
| Alarm Event | Network disconnection; IP conflict; illegal access; motion detection; audio detection; video tampering; security exception |
|-------------|--|

#### Network

|                  |  |
|------------------|--|
| Network Port     | RJ-45 (10/100 Base-T)  |
| Network Protocol | IPv4; IPv6; HTTP; TCP; UDP; ARP; RTP; RTSP; RTCP; SMTP; FTP; DHCP; DNS; DDNS; NTP; Multicast; P2P  |
| Interoperability | ONVIF (Profile S; Profile T); CGI  |
| User/Host        | 6 (Total bandwidth: 24 M)  |
| Storage          | FTP  |
| Browser          | IE; Chrome; Firefox  |
| Mobile Client    | iOS; Android   |
| Cyber Security   | Configuration encryption; Trusted execution; Digest; Security logs; HTTPS; Trusted upgrade; WSSE; Trusted boot; Account lockout; Generation and importing of X.509 certification; Video encryption |

#### Power

|                   |  |
|-------------------|--|
| Power Supply      | 12 VDC/PoE   |
| Power Consumption | Basic: 1.4 W (12 VDC); 2.1 W (PoE)<br>Max. (ICR switch+illuminator intensity): 3.0 W (12 VDC); 4.2 W (PoE) |

#### Environment

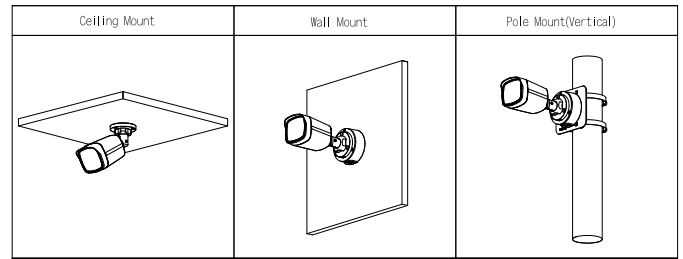
|                       |                                      |
|-----------------------|--------------------------------------|
| Operating Temperature | –40 °C to +50 °C (–40 °F to +122 °F) |
| Operating Humidity    | ≤95%                                 |
| Storage Temperature   | –40 °C to +60 °C (–40 °F to +140 °F) |
| Storage Humidity      | ≤95%                                 |
| Protection            | IP67                                 |

#### Structure

|                 |         |
|-----------------|---------|
| Casing Material | Plastic |
|-----------------|---------|

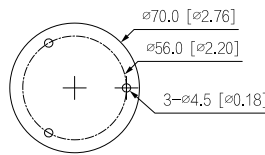
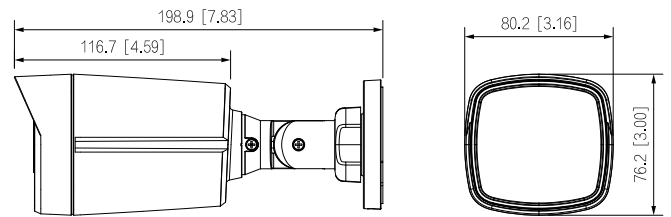
# Entry Series | DH-IPC-HFW1430TL2-A

|                    |   |
|--------------------|---|
| Product Dimensions | 198.9 mm × 80.2 mm × 76.2 mm (7.83" × 3.16" × 3.00")<br>(L × W × H) |
| Net Weight         | 0.25 kg (0.55 lb)   |
| Gross Weight       | 0.37 kg (0.82 lb)   |



| Ordering Information   |                     |  |
|------------------------|---------------------|--|
| Type                   | Model               | Description                                    |
| 4MP Camera             | DH-IPC-HFW1430TL2-A | 4MP Entry IR Fixed-focal Bullet Network Camera |
| Accessories (Optional) | PFM321D             | 12 VDC 1 A Power Adapter                       |
|                        | PFM900-E            | Integrated Mount Tester                        |
|                        | PFA130-E            | Water-proof Junction Box                       |
|                        | PFA157              | Pole Mount Bracket                             |

## Dimensions (mm[inch])



## Accessories

Optional:



PFM321D  
12 VDC 1 A Power  
Adapter



PFM900-E  
Integrated  
Mount Tester



PFA130-E  
Water-proof  
Junction Box



PFA157  
Pole Mount  
Bracket