

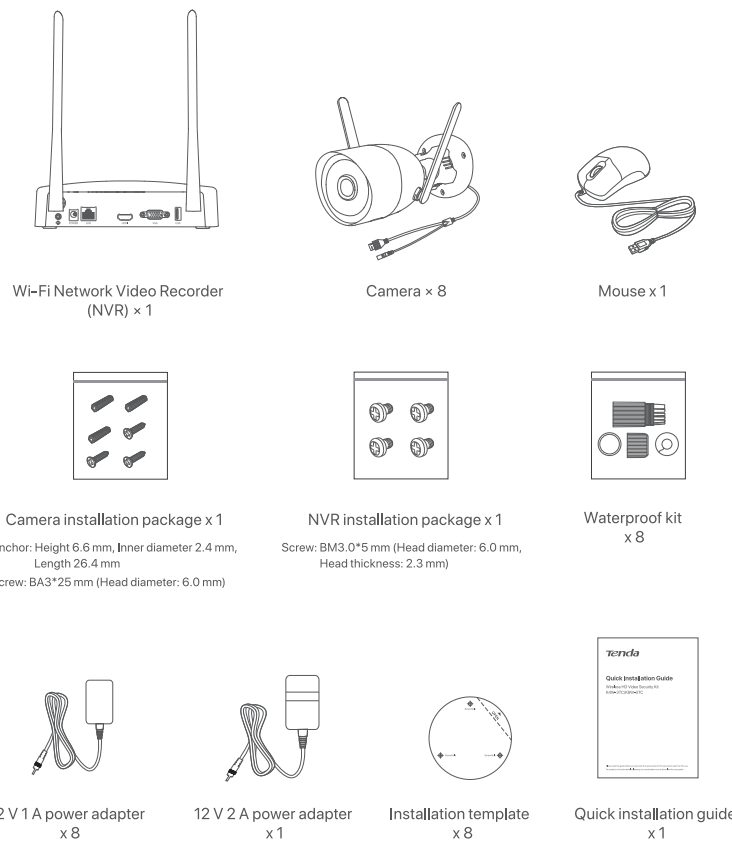
Tenda

Quick Installation Guide

Wireless HD Video Security Kit
K4W-3TC/K8W-3TC

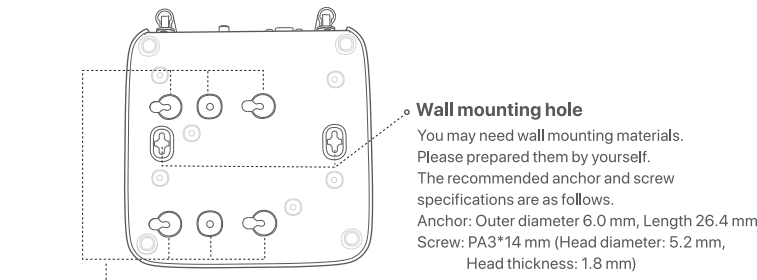
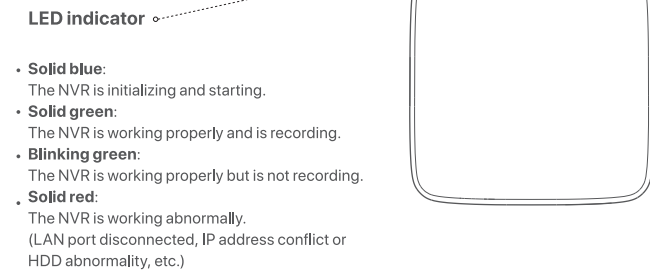
Package contents

The K8W-3TC kit is taken as an example here. The actual product prevails.



Appearance

• NVR



• Hard disk drive (HDD) screw hole



1 Install the HDD

Tips: This kit does not include any HDD. Please prepare it by yourself. It is recommended to use the HDD dedicated for surveillance. When installing or replacing the HDD, please cut off the power of the NVR, otherwise the HDD may not be detected or even be damaged. You may need a screwdriver. Please prepare it by yourself.

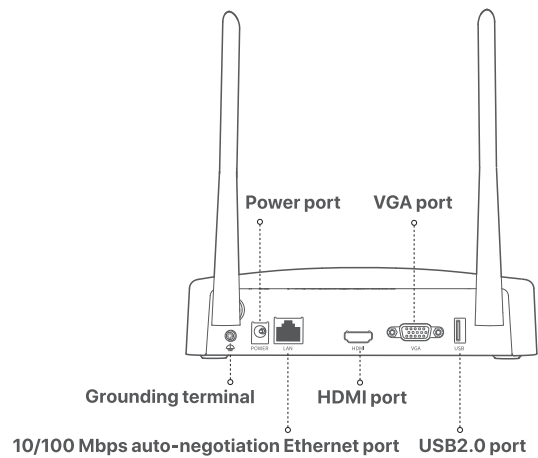
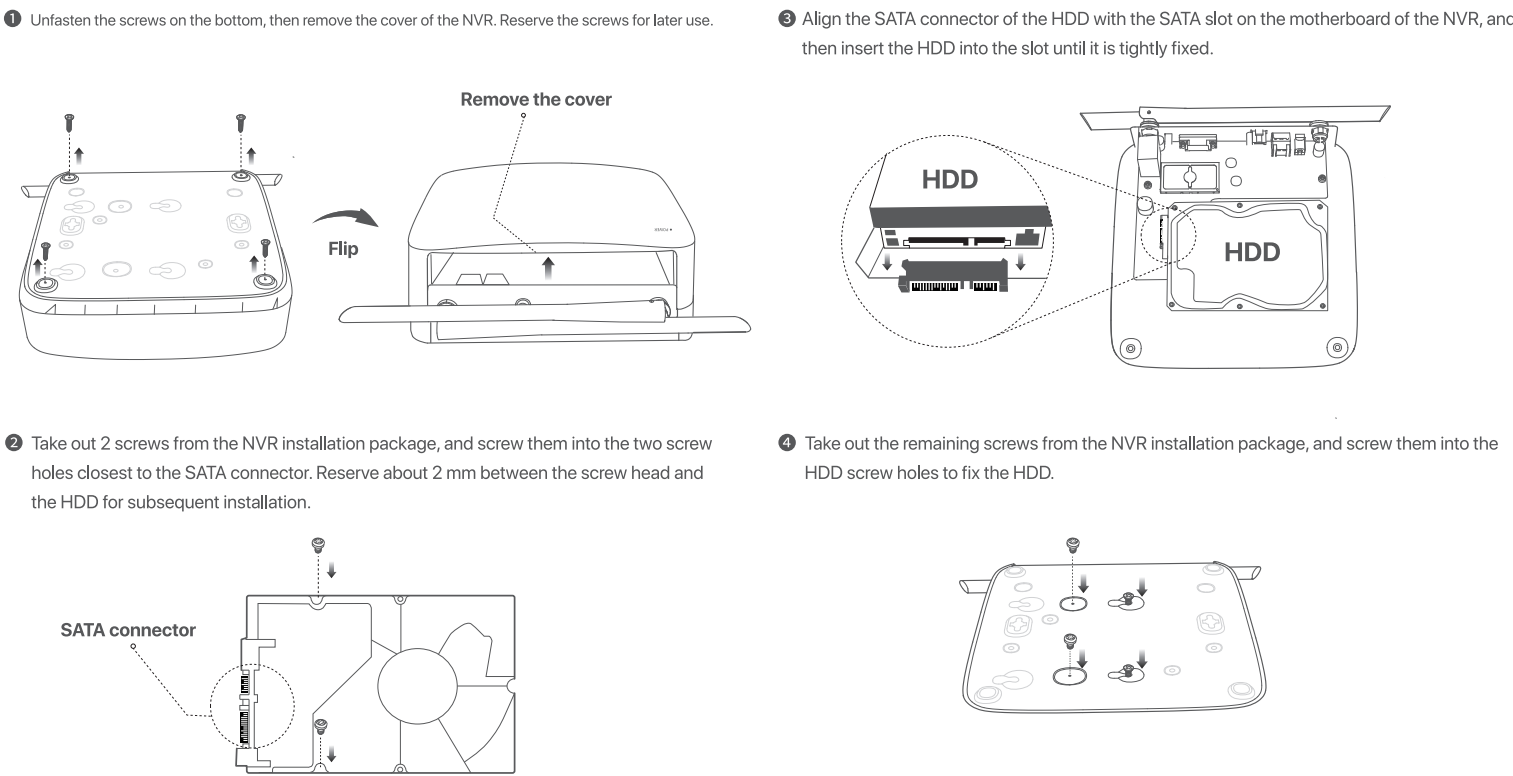
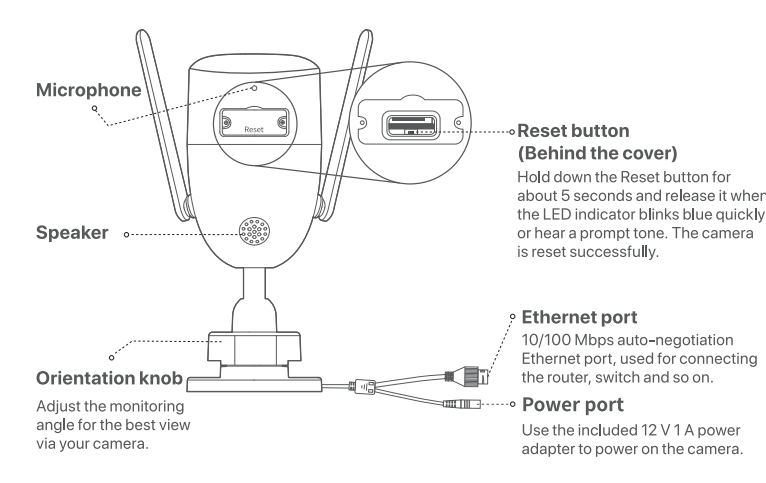
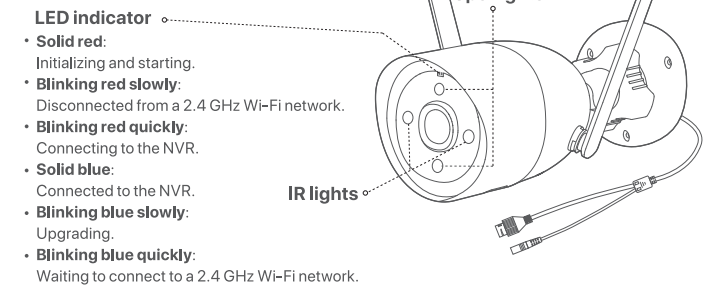


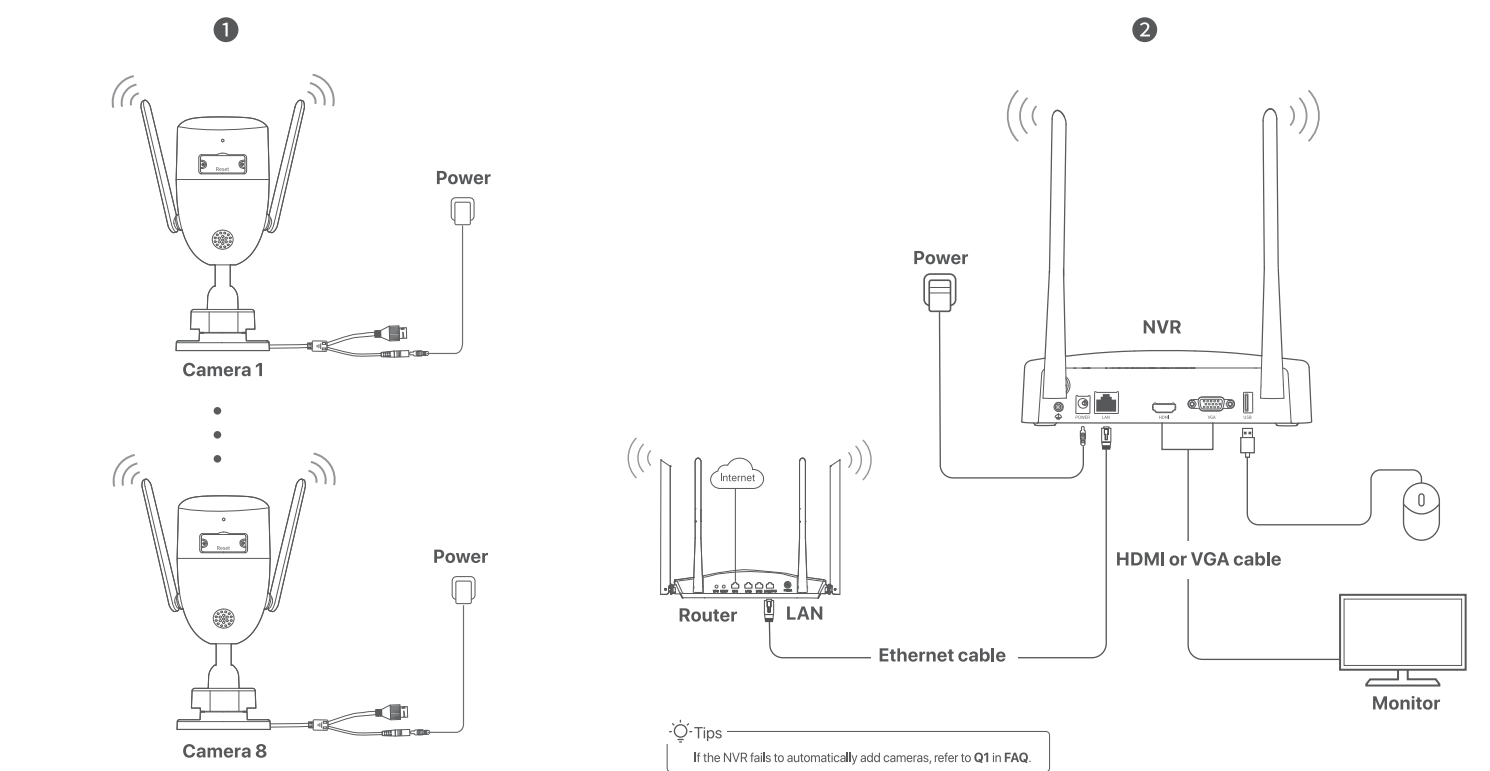
Table with 2 columns: Ports and Description. Lists connections for Grounding terminal, Power port, LAN, HDMl port, VGA port, and USB.

• Camera



2 Connect the device

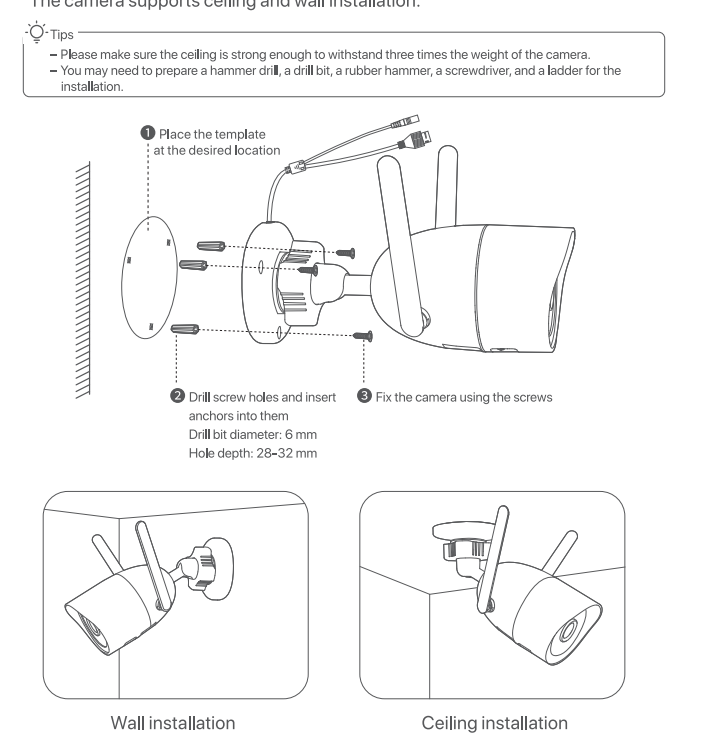
The K8W-3TC kit is taken as an example here. Place all cameras near the NVR, and power on the cameras first (12 V 1 A), then power on the NVR (12 V 2 A). The cameras and the NVR will automatically establish connections within 2 minutes.



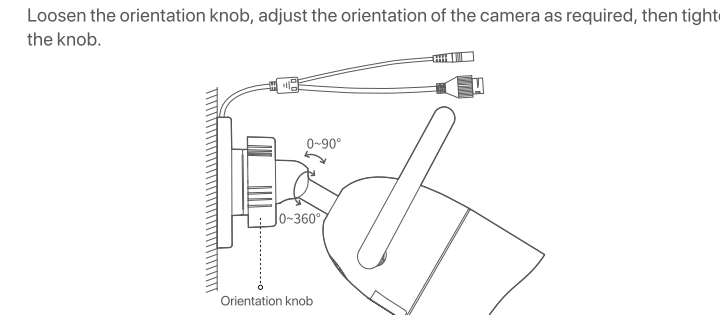
3 Install the camera

Install the camera to the monitoring location as required. The camera needs to be placed within the wireless coverage of the NVR. The distance between the NVR/camera and the wireless router, induction cooker, microwave oven, and refrigerator should be more than 1 meter.

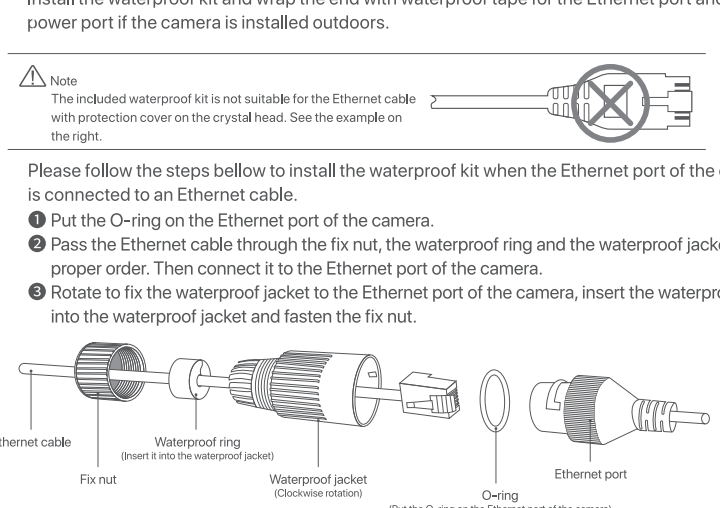
• Fix the camera



• Adjust the monitoring angle

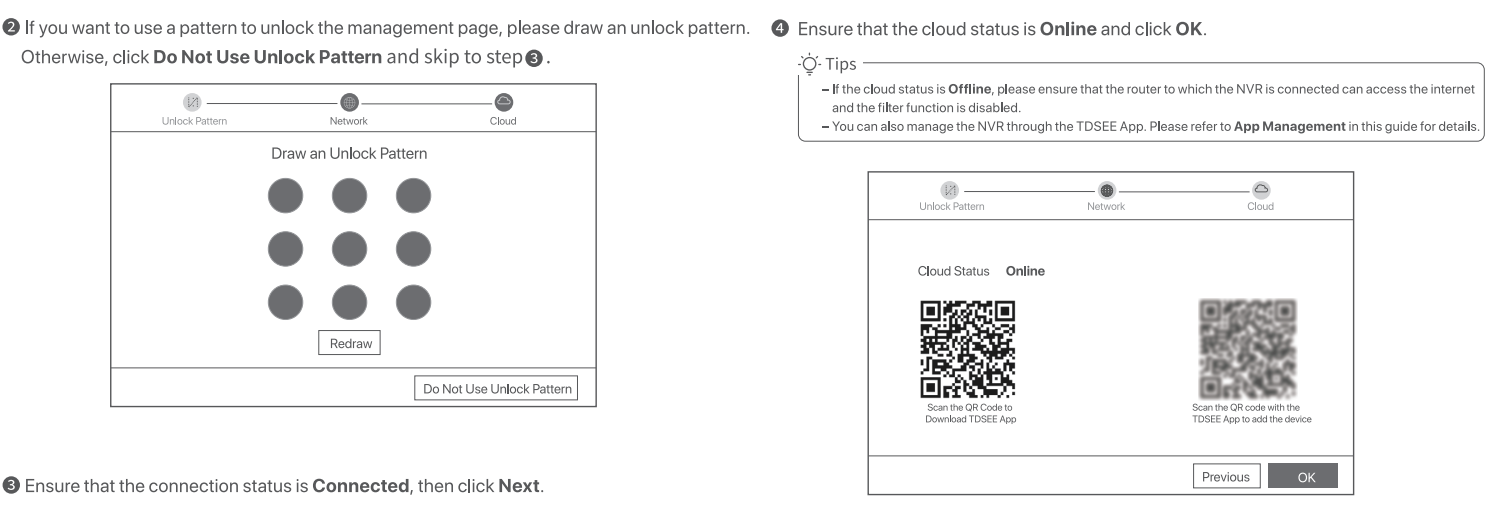
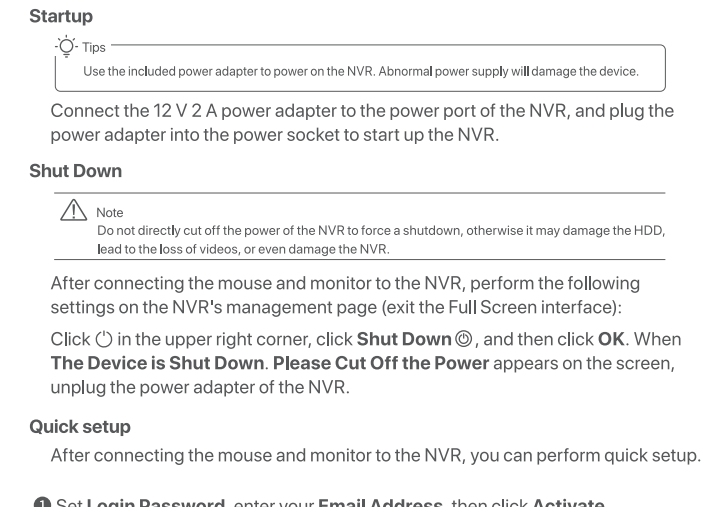


• Install waterproof kit



4 Basic configuration

• Local management



App management

After the cloud service of the NVR is enabled and the cloud status is online, you can add and manage the NVR through the TDSEE App.



- Ensure that the NVR is powered on and working properly.
Run the TDSEE App and follow the instructions to complete user registration. Enter the Home page, then tap Add a device or in the upper right corner of the home page.

FAQ

- Q1. What should I do if the NVR fails to automatically add the camera?
Q2. What should I do when the video preview is not smooth or the camera is often offline?
Q3. How to add a new camera when the NVR is under stable operation?
Q4. What should I do if there is no video for playing back on the NVR?

CE

CE Mark Warning (KCT6)
This is a Class B product. In a domestic environment, this product may cause radio interference, in which case the user may be required to take adequate measures.
Declaration of Conformity (KCT6)
Hereby, SHENZHEN TENDA TECHNOLOGY CO., LTD. declares that the radio equipment type KCT6 is in compliance with Directive 2014/53/EU.

Caution

Caution (N3W-4H & N3W-8H)
Adapter Model: BN026-A24012E, BN026-A36012B
Manufacturer: SHENZHEN HEWESHUN NETWORK TECHNOLOGY CO., LTD.
Input: 100-240V AC, 50/60Hz 0.7A
Output: 12V DC, 2A
DC Voltage
Camera is used outdoors. NVR and Adapter are used indoors.
RECYCLING
This product bears the selective sorting symbol for Waste electrical and electronic equipment (WEEE).
FCC
FCC Statement (KCT6)
This equipment has been tested and found to comply with the limits for a Class A digital device, pursuant to Part 15 of the FCC Rules.

FCC

FCC Statement (N3W-4H & N3W-8H)
This equipment has been tested and found to comply with the limits for a Class B digital device, pursuant to Part 15 of the FCC Rules.
Technical Support
Shenzhen Tenda Technology Co., Ltd.
6-8 Floor, Tower E3, NO.1001, Zhongshanjuan Road, Nanshan District, Shenzhen, China 518052
USA hotline: 1-800-570-5892
Canada hotline: 1-888-998-8966
Tel Free: Mon-Fri 9 am-6 pm PST
Hong Kong hotline: 00852-81931998
Global hotline: +86 755-2765 7180 (China Time Zone)
Website: www.tendacn.com
Email: support@tenda.com.cn
Copyright
© 2021 Shenzhen Tenda Technology Co., Ltd. All rights reserved.
Tenda is a registered trademark, legally held by Shenzhen Tenda Technology Co., Ltd. Other brand and product names mentioned herein are trademarks or registered trademarks of their respective holders. Specifications are subject to change without notice.